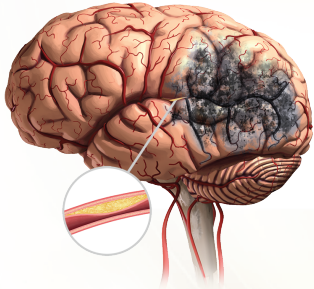


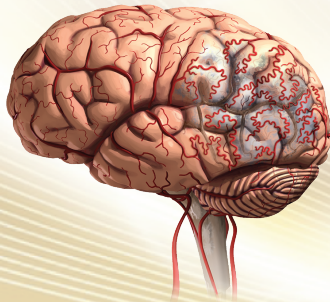
SOULAIRE CIRCULATION™

EFFECT ON STROKE

Before Soulaire



After Soulaire



Soulaire Circulation has been shown to improve the functions and actions of the Brain. Like the heart which can become ischemic, the brain also experiences ischemia causing a stroke (brain attack).

The squeezing mechanism of Soulaire Circulation increases sheer force of reversed blood flow to the heart, in turn there is more perfusion of oxygenation of blood to brain and the nervous system of the brain, creating an environment in your body that:

- Helps secretes vascular endothelial growth factor (VEGF), a hormone that stimulates the growth of new arteries called collaterals, creating a natural bypass. This natural occurrence enhances healing and improves structural integrity of tissue and blood vessels of the brain
- Regenerating the central nervous system helps clients improve debilitating symptoms of stroke such as direct motor functions like walking, balance, speech, and vision
- Reduction of Neuro-inflammation and balancing the autonomic nervous system
- Activates Stem Cells to regrow damaged tissues of the brain due to ischemic brain disease (brain attack). This process reverses the damaged cells from a stroke

